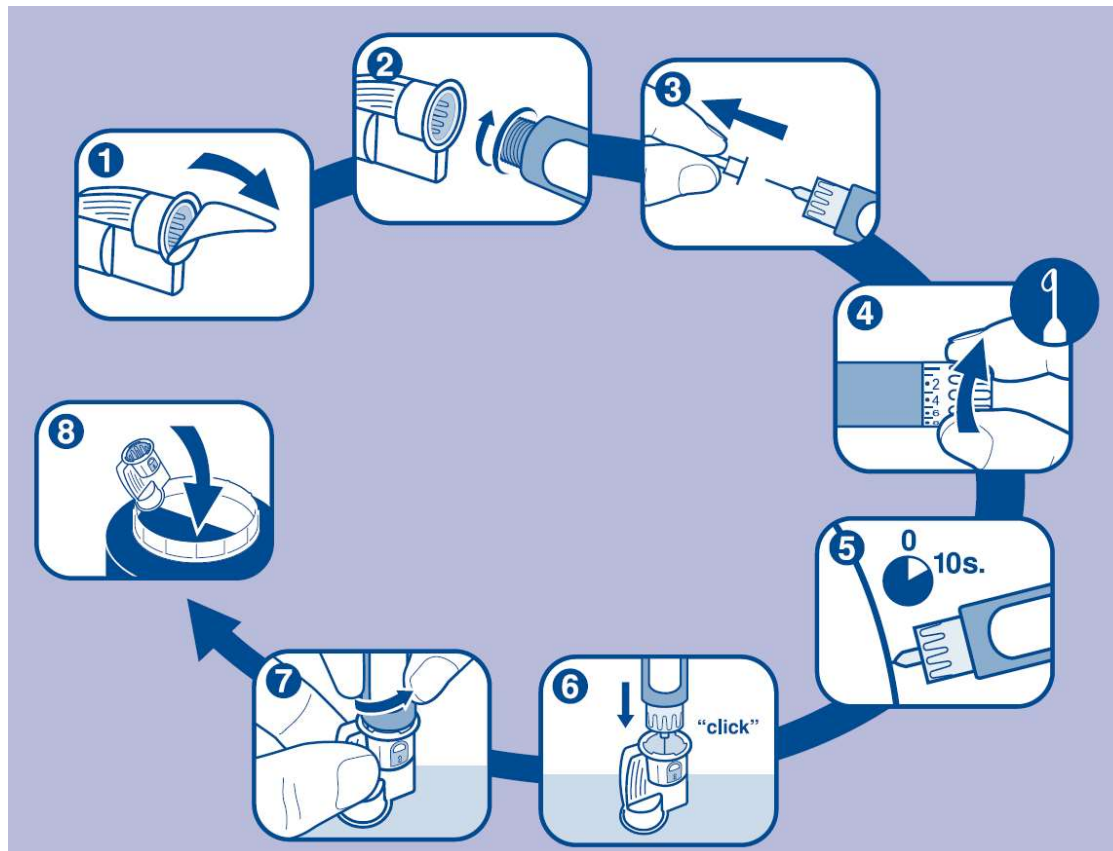


How to use



1. Remove peel paper.
2. Screw NEW pen needle straight onto injection device.
3. Remove outer and inner container. Keep outer container, but dispose of smaller inner container.
4. Prime injection device as per instructions provided.
5. Insert needle and inject as per technique recommended by healthcare professional. After injection, count to 10 before removing needle from the skin.
6. After injection, push USED pen needle into removal chamber until it clicks to indicate it is safely secured.
7. Unscrew used pen needle.
8. Dispose of used pen needle safely as per your healthcare professional recommendations or local regulations (e.g. suitable sharps container).