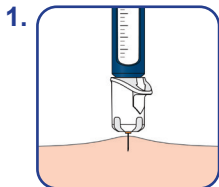
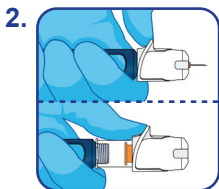




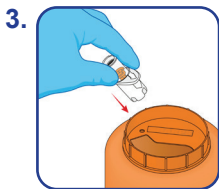
How to Use



Remove protective seal, screw needle onto injection pen and remove green cap. Inject as per pen instructions.



After injection, push the white safety guard away from you until it clicks and covers the needle. You will now see an orange indicator.



Unscrew needle from the injection pen and dispose of in sharps container.

UNIFINESAFECONTROLIFU/A5/OMM/0221/0

Wash hands thoroughly and/or change personal protective equipment before and after using the device in accordance with your institution's guidelines.